

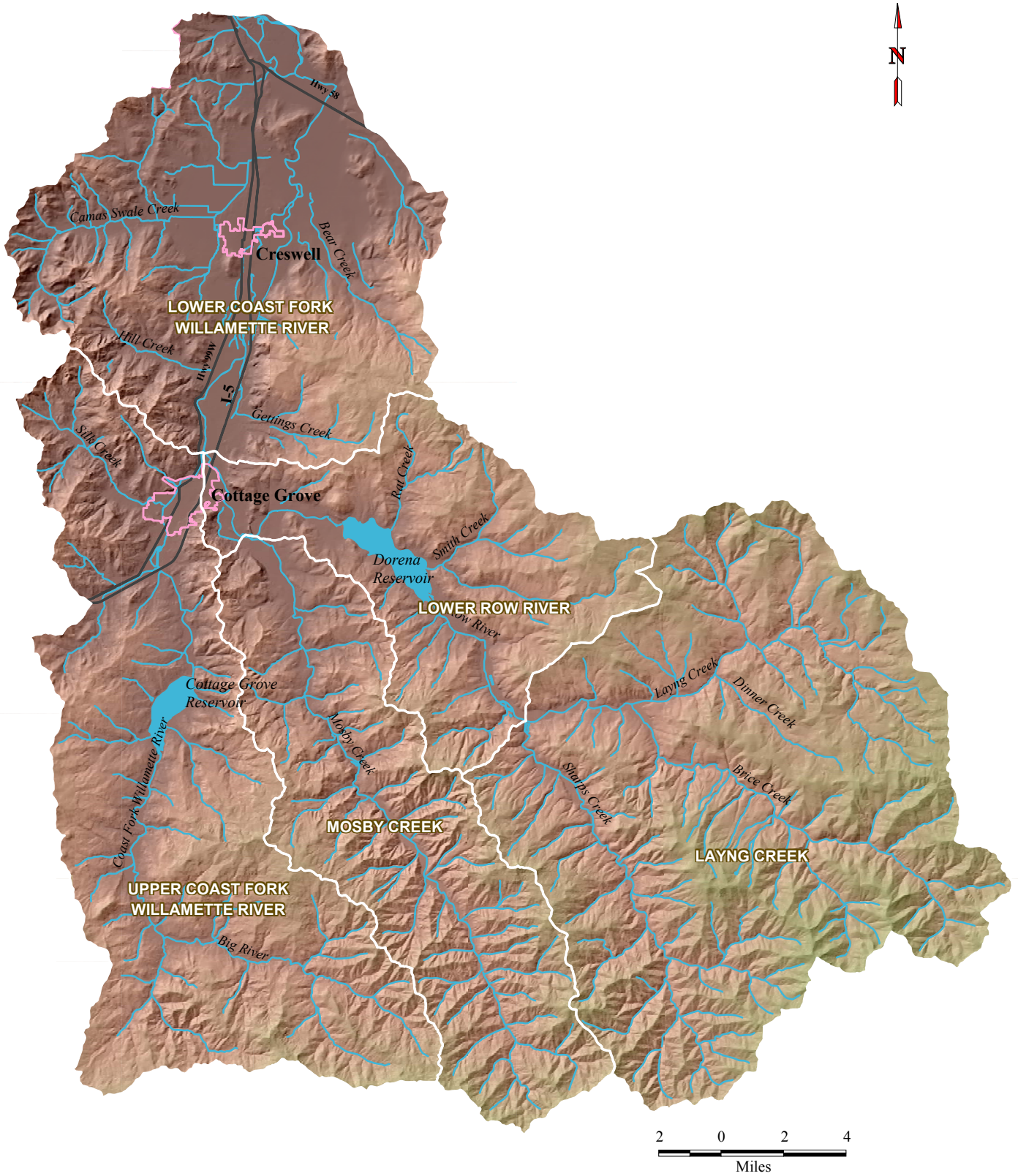
# COAST FORK WILLAMETTE RIVER WATERSHED AND ASSESSMENT AREA



# COAST FORK WATERSHED WITHIN LANE COUNTY



# FIFTH FIELD WATERSHED SUBBASINS



# USGS 6TH FIELD SUBBASINS



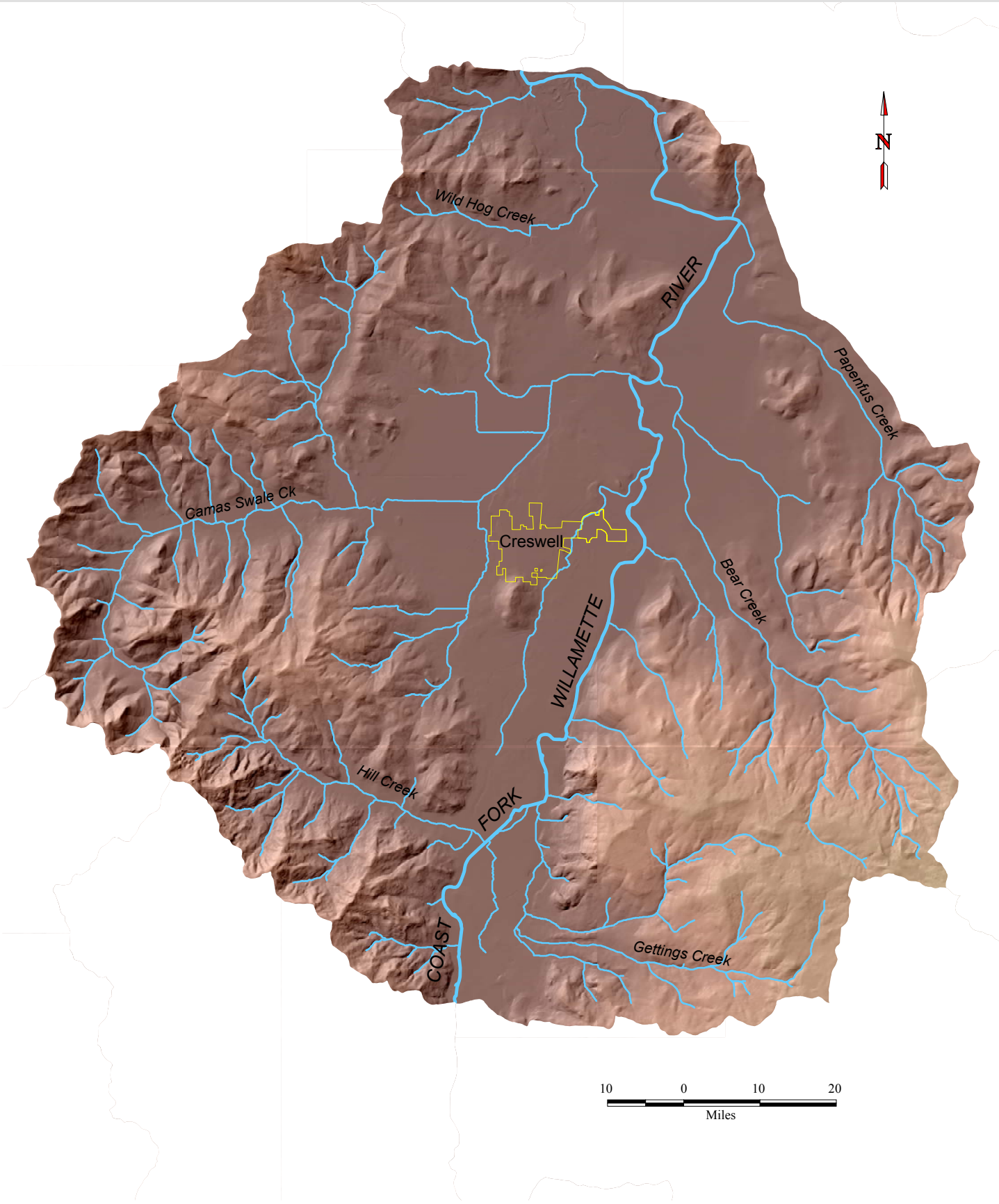


# MODIFIED\* 6TH FIELD SUBBASINS

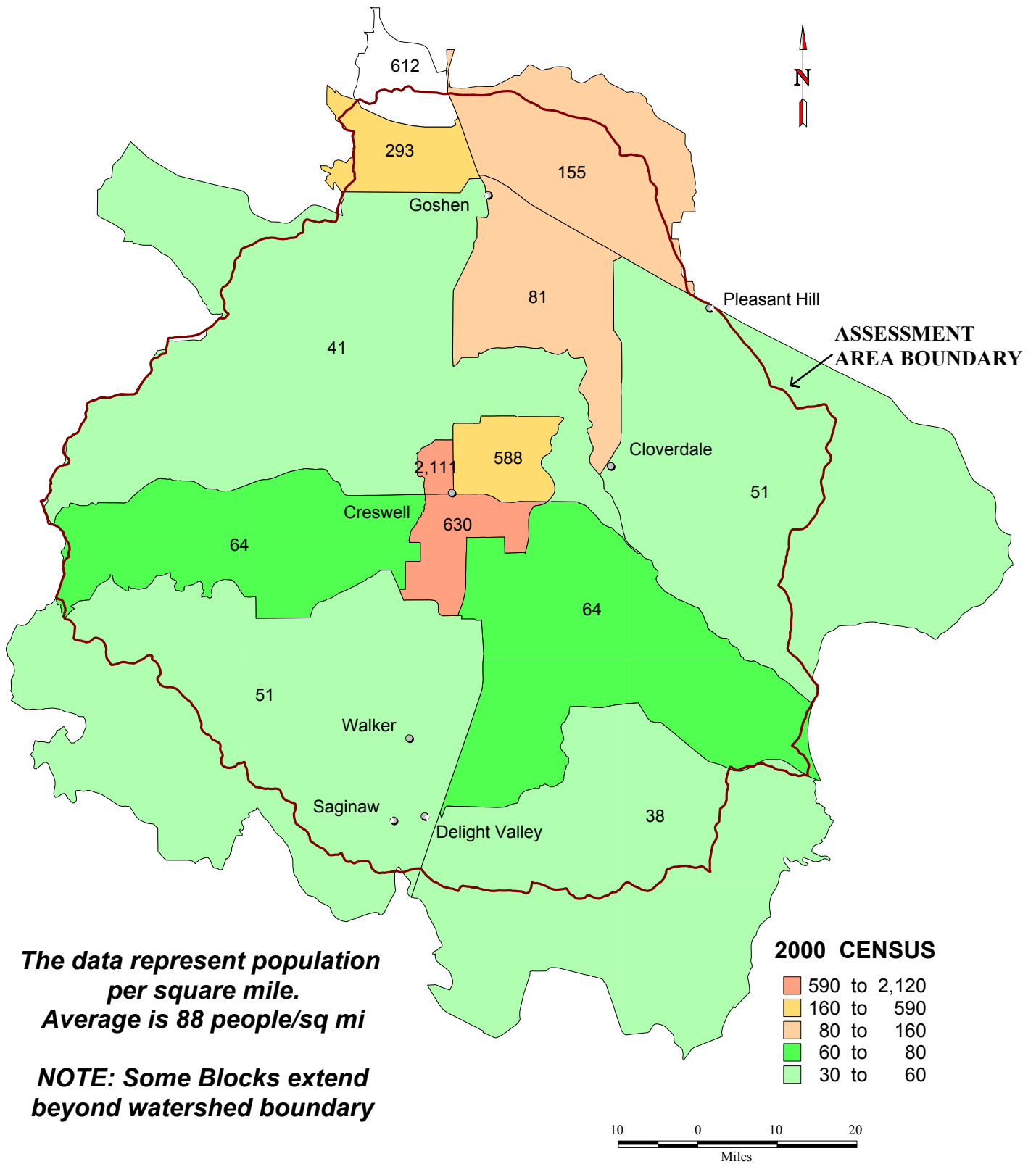


\*Refer to Chapter 1 for explanation of modifications

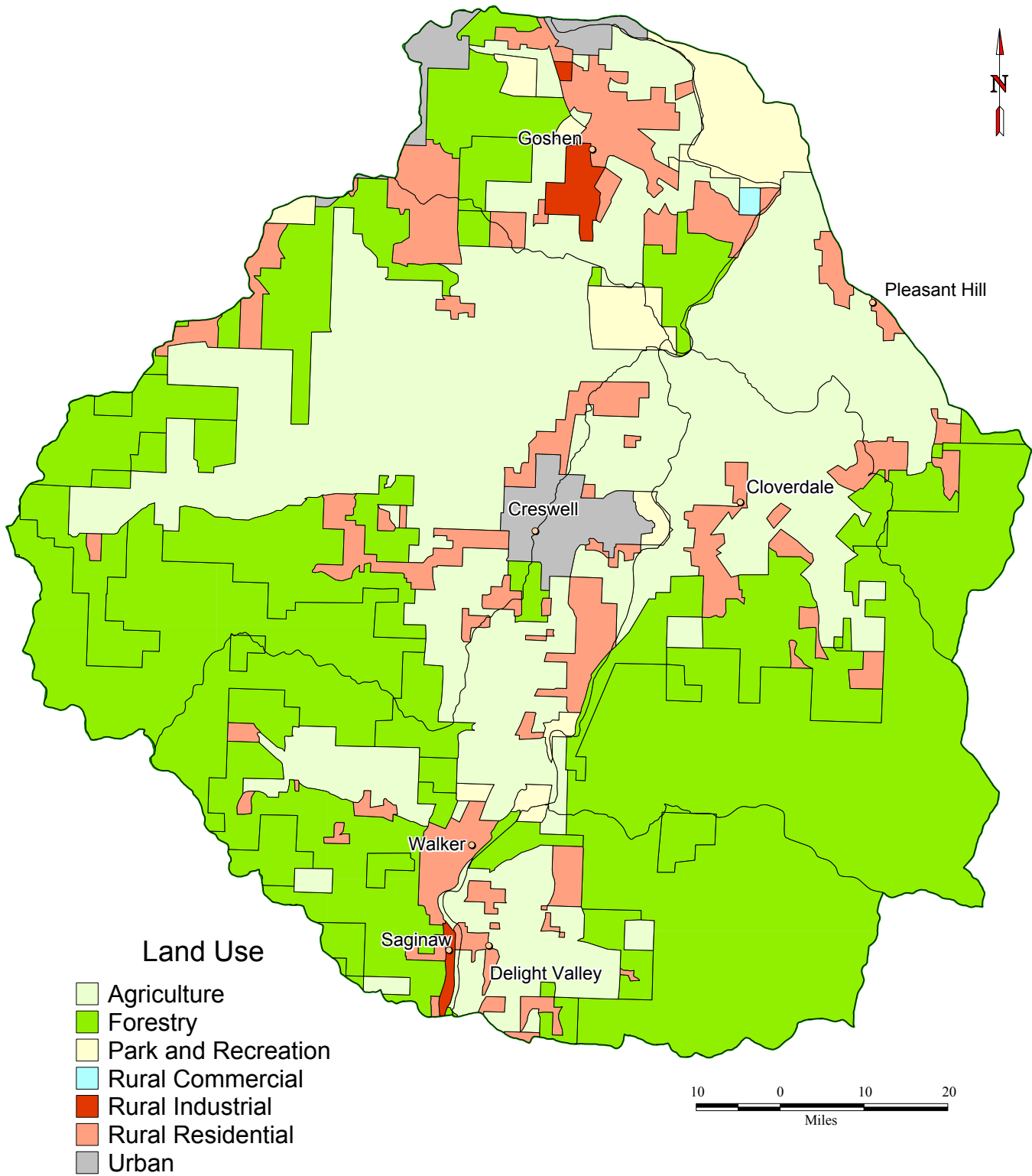
# RIVERS AND CREEKS



# CENSUS 2000 POPULATION DENSITY



# LAND USE ZONING

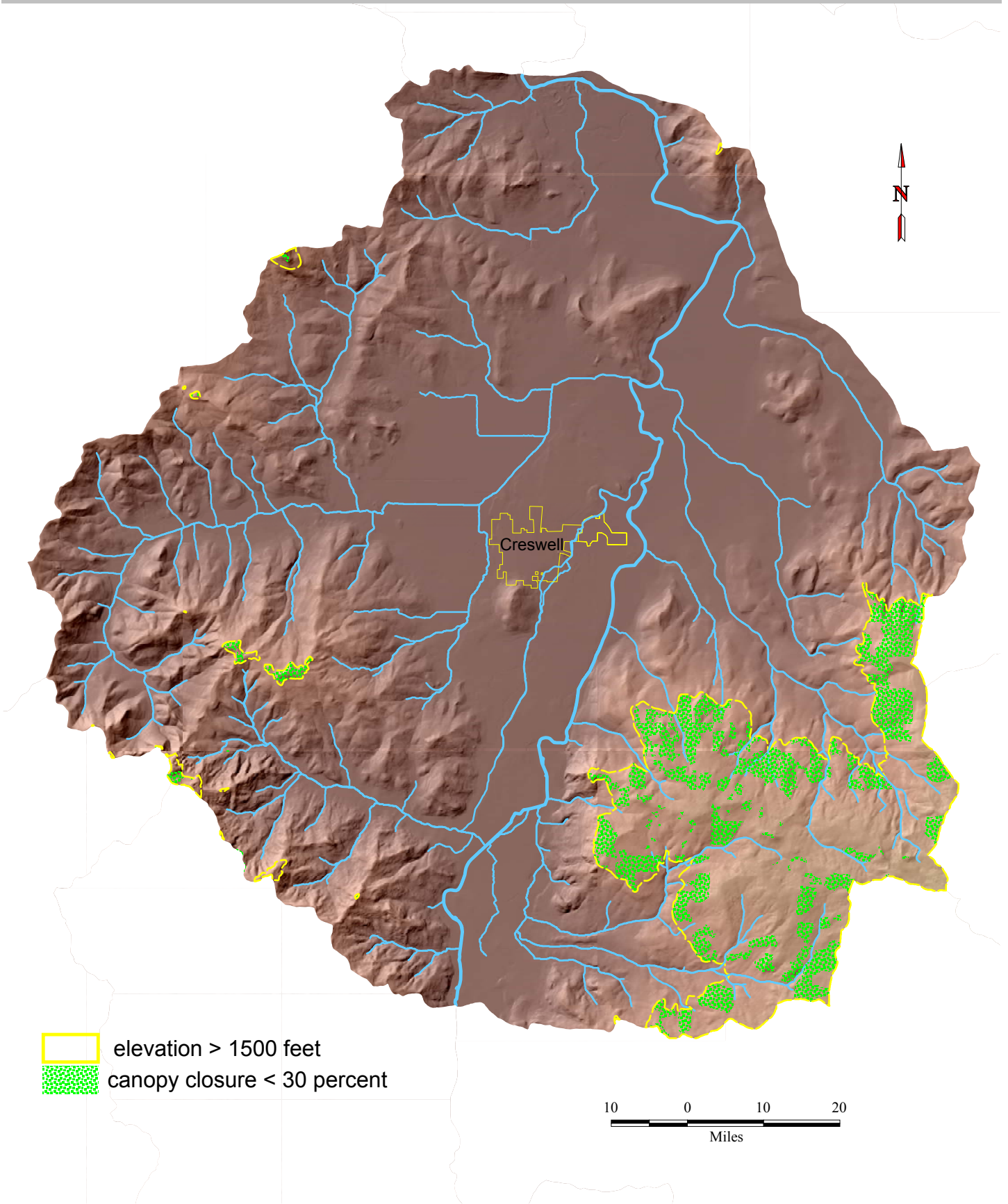




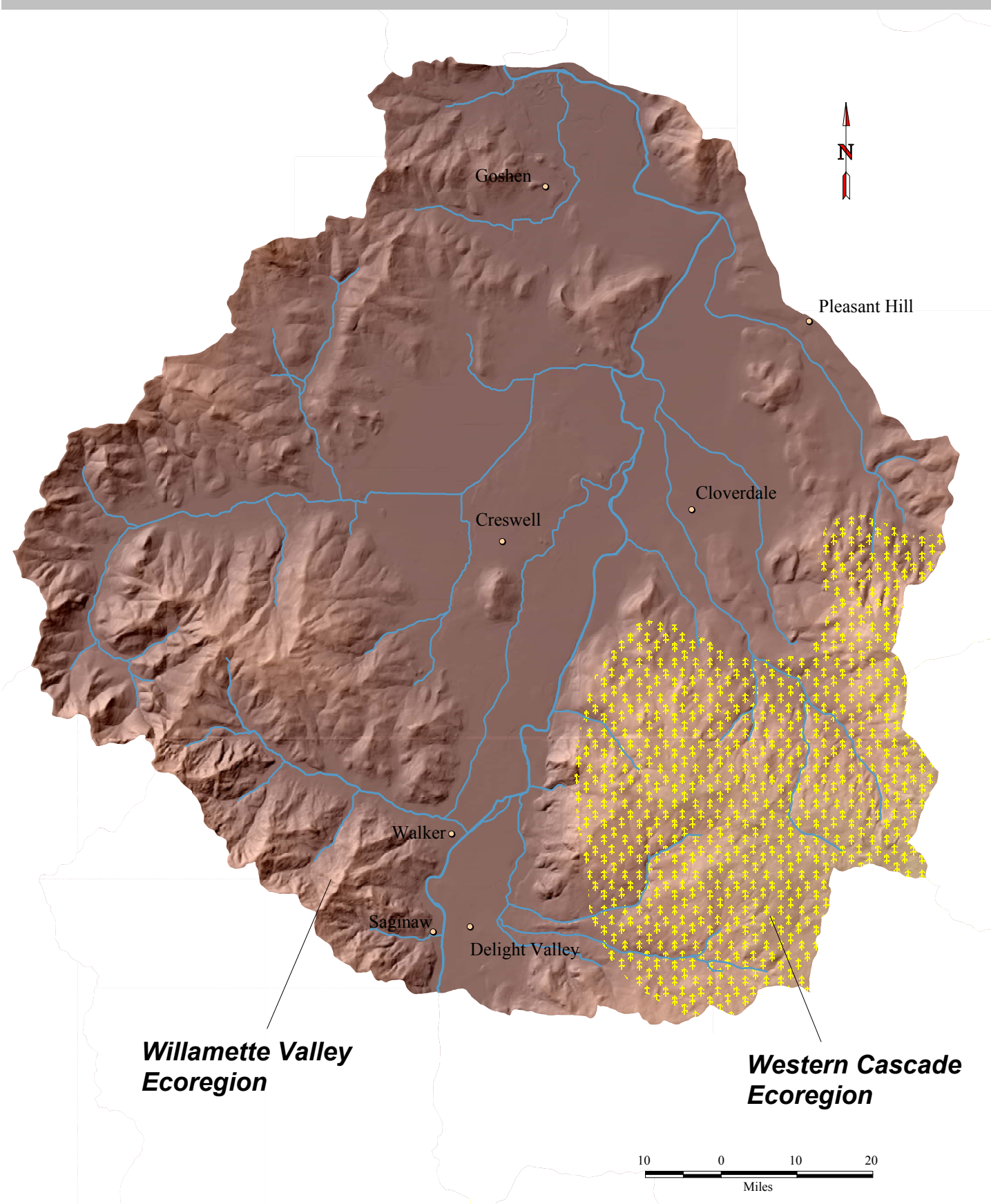
# RAIN ON SNOW ZONE AT ELEVATIONS GREATER THAN 1500'



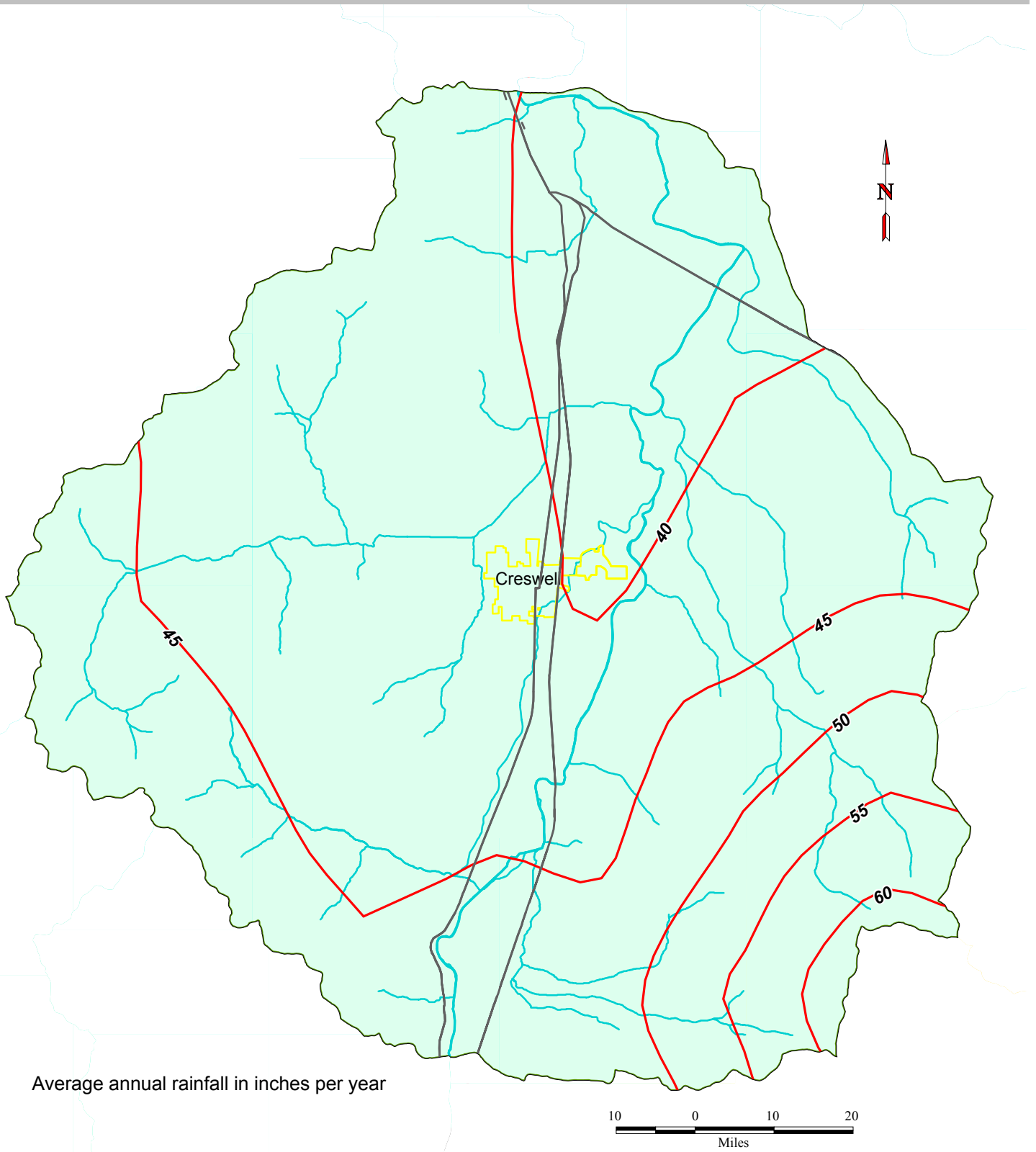
# CANOPY CLOSURE < 30% IN RAIN-ON-SNOW ZONE



# ECOREGIONS

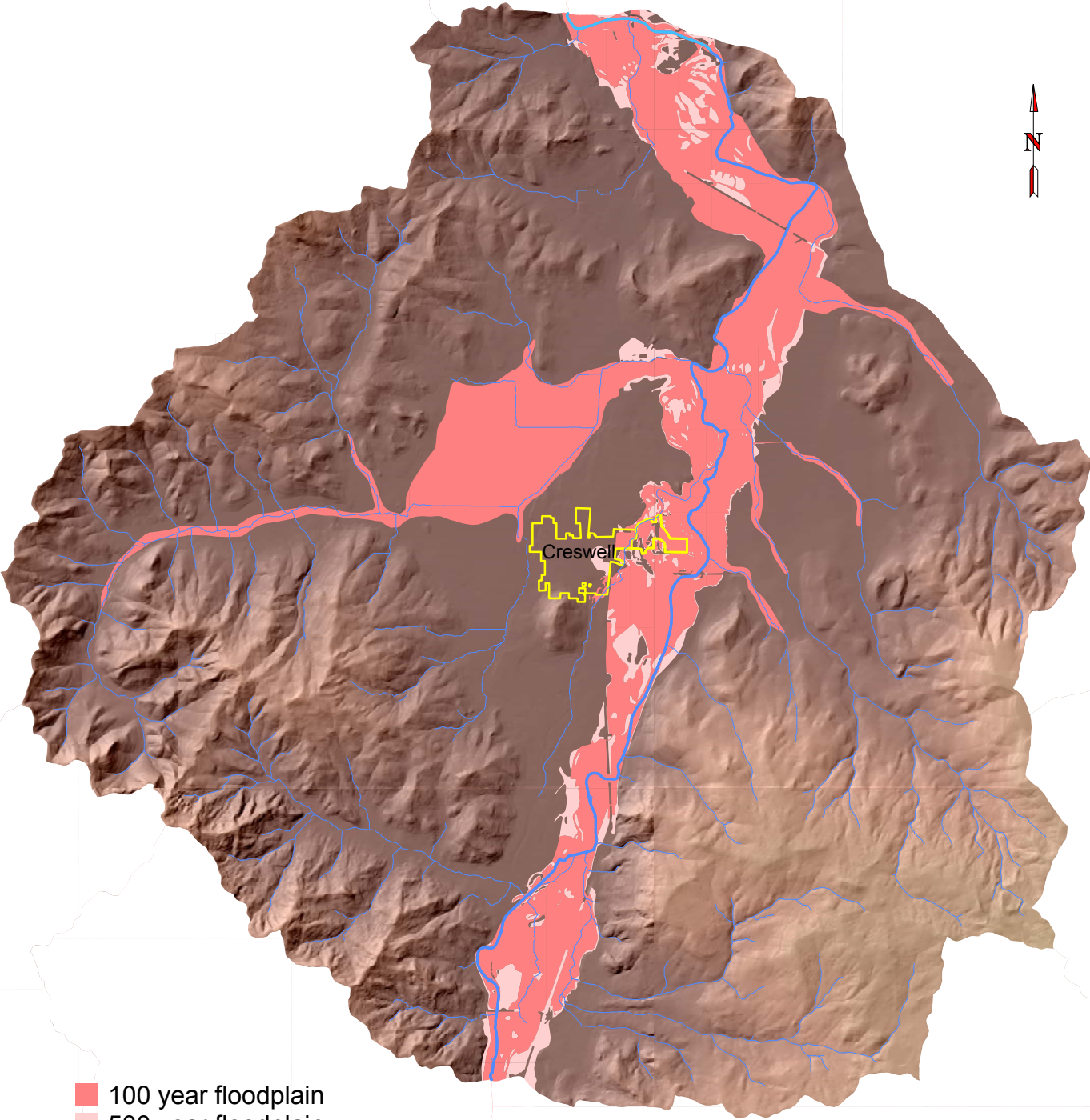


# AVERAGE PRECIPITATION 1960-1990





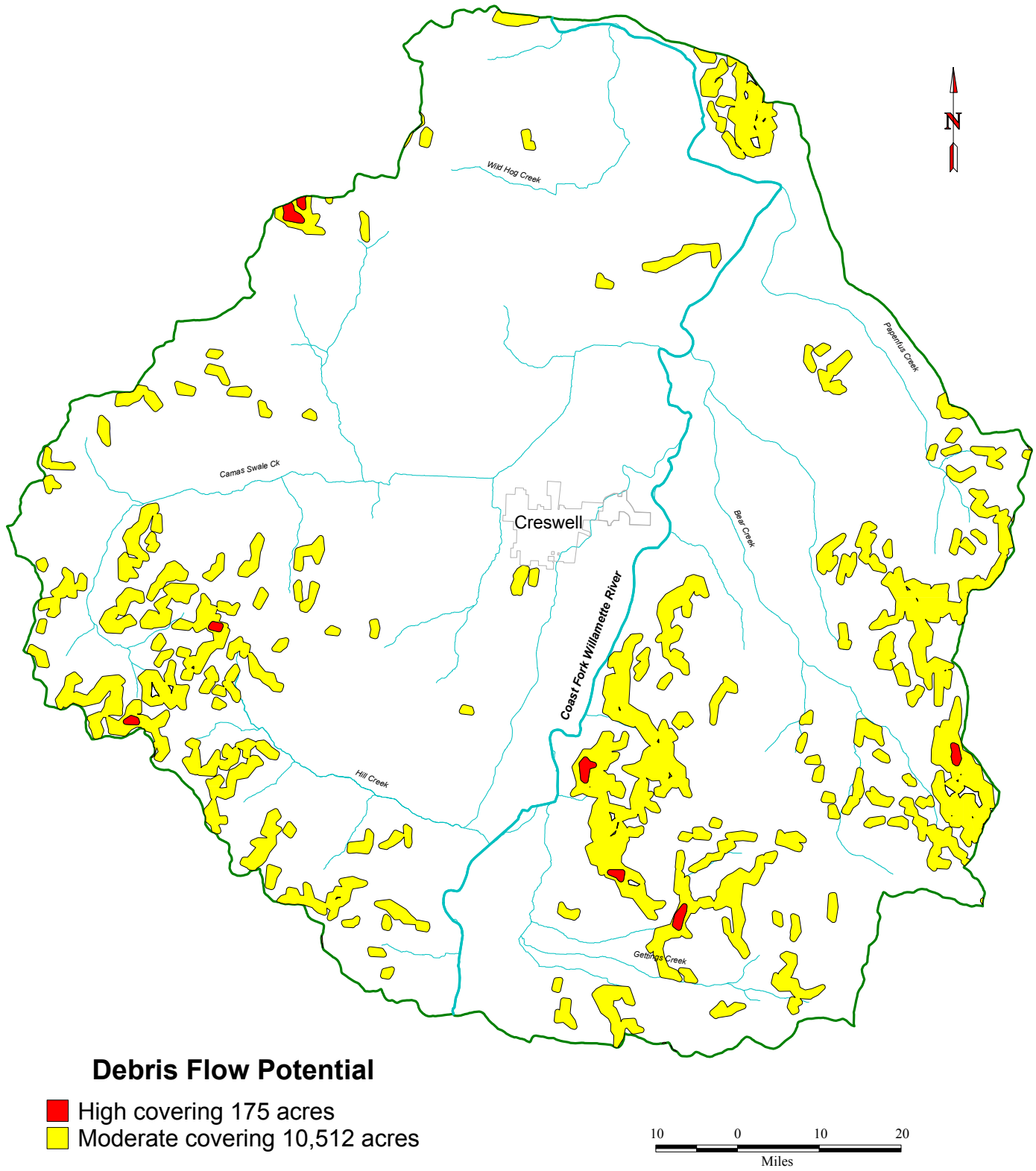
# FLOODPLAIN DESIGNATIONS



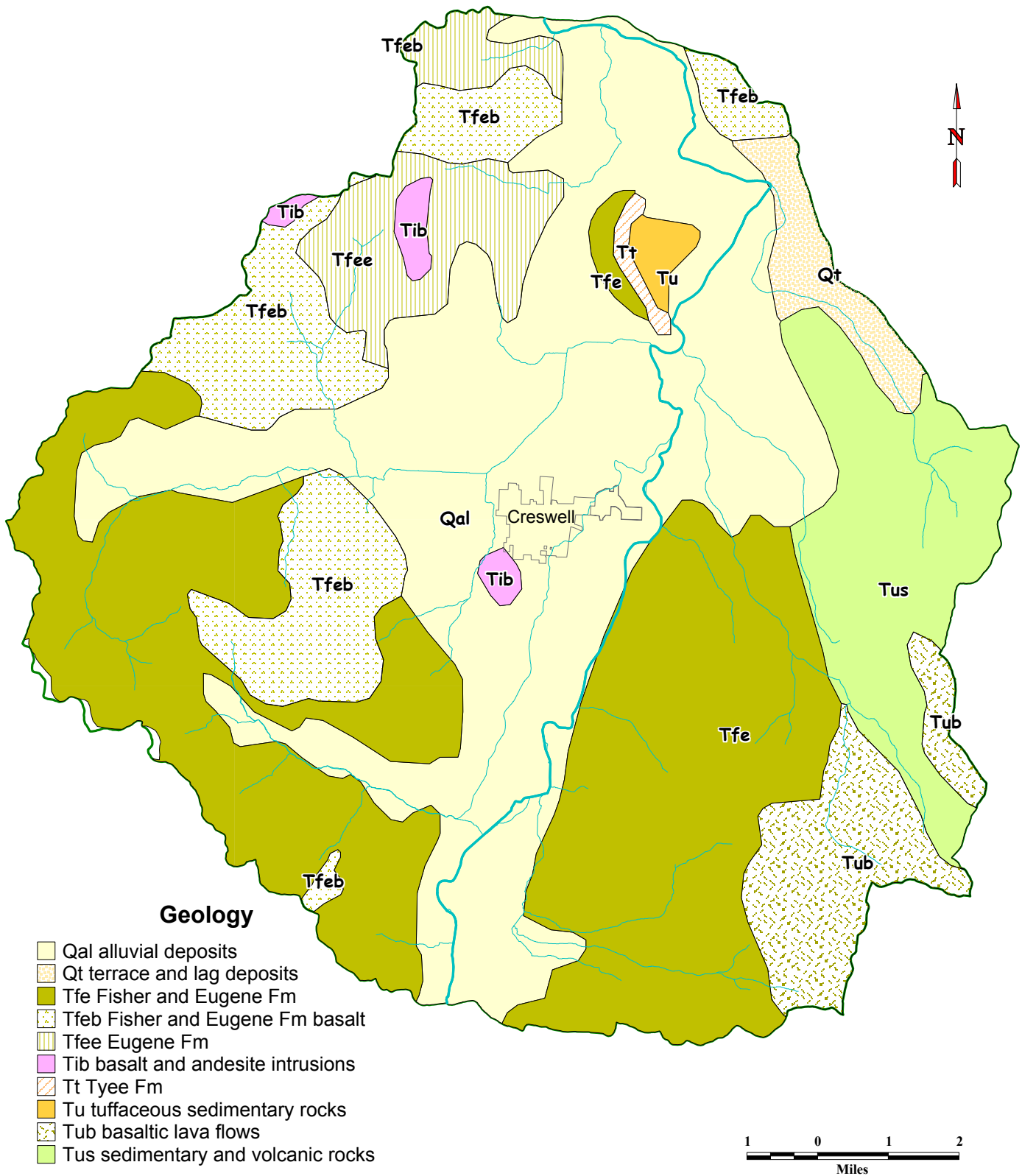
■ 100 year floodplain  
■ 500 year floodplain

10 0 10 20  
Miles

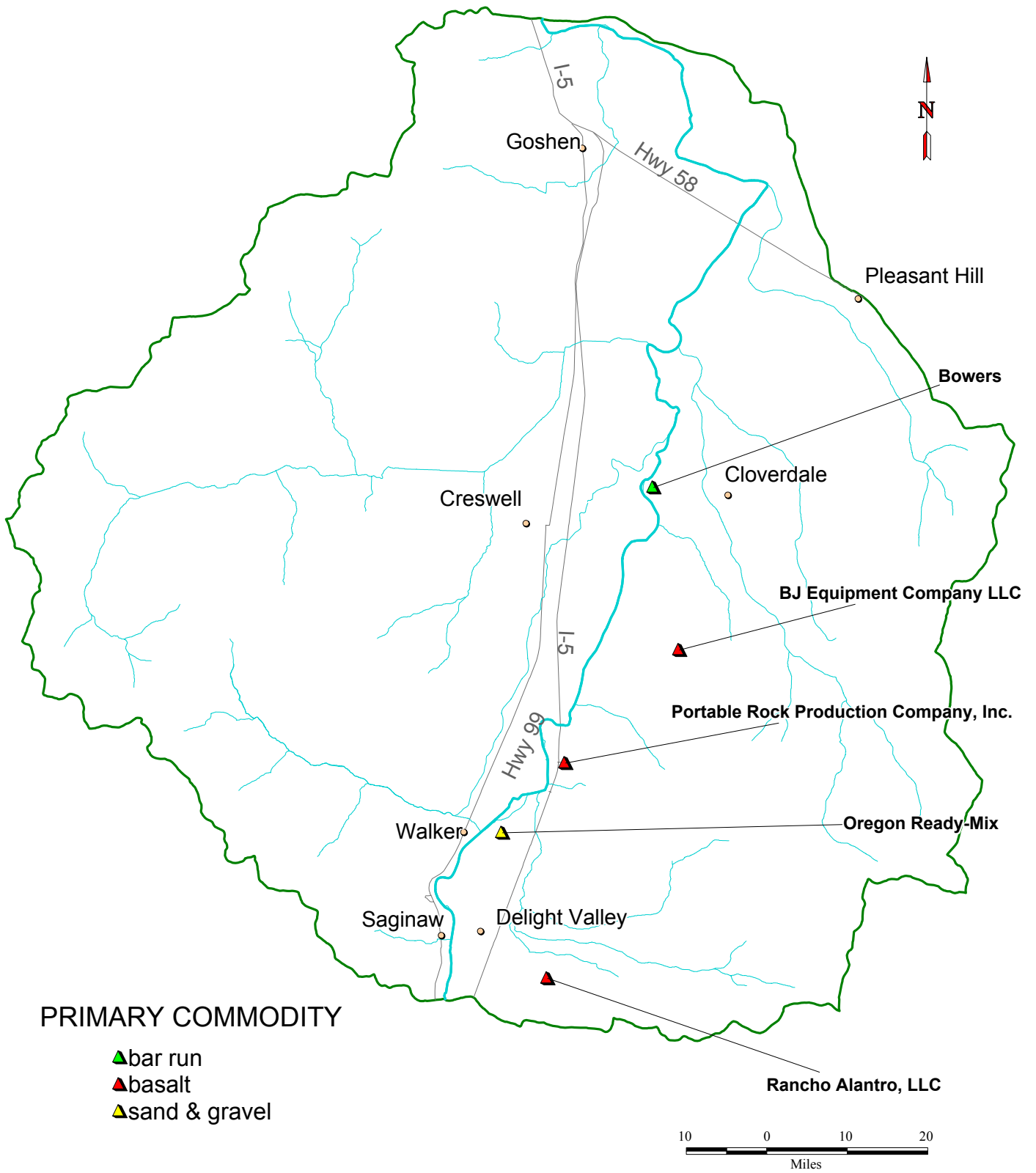
# DEBRIS FLOW POTENTIAL



# GEOLOGY

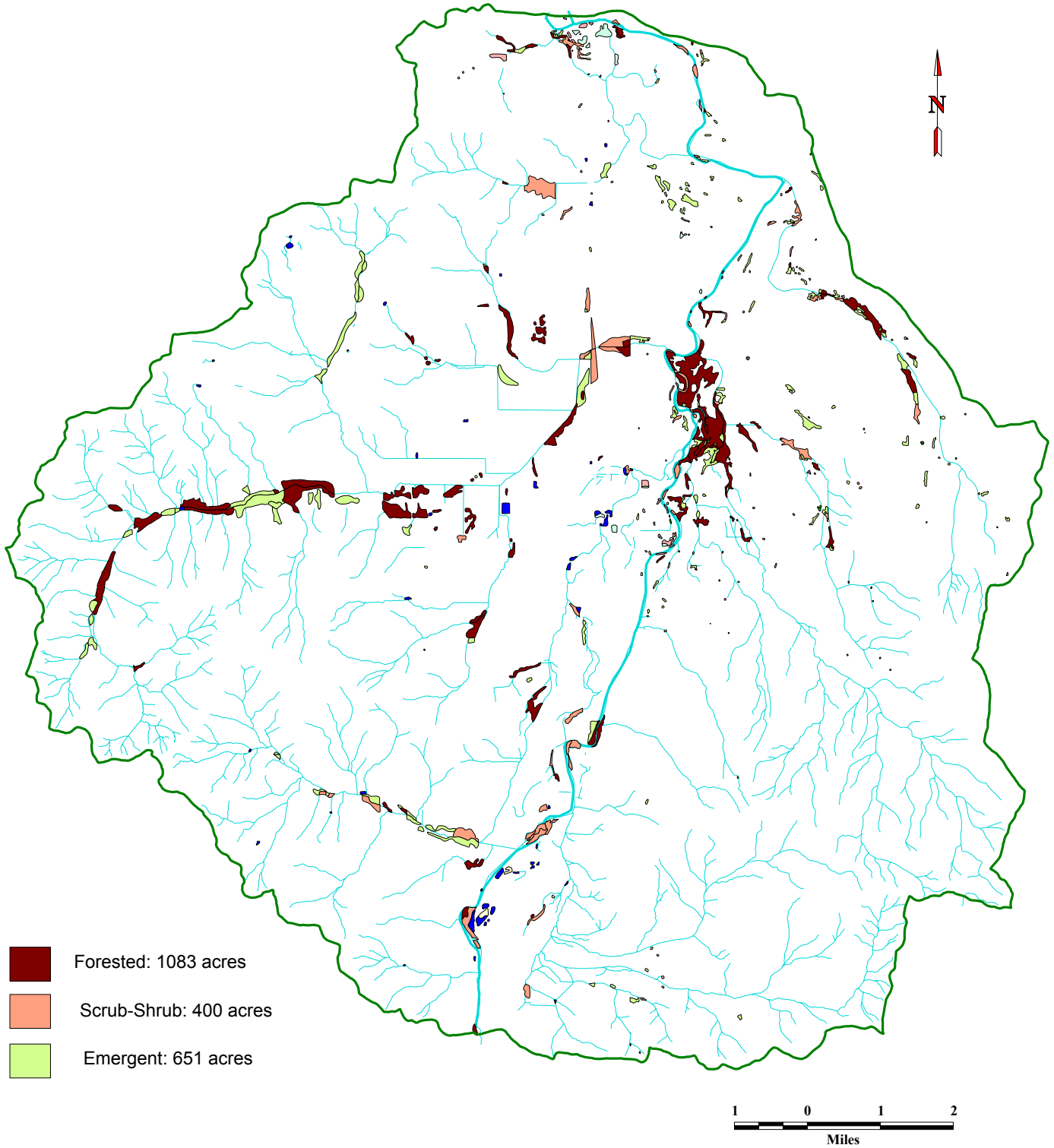


# AGGREGATE MINES

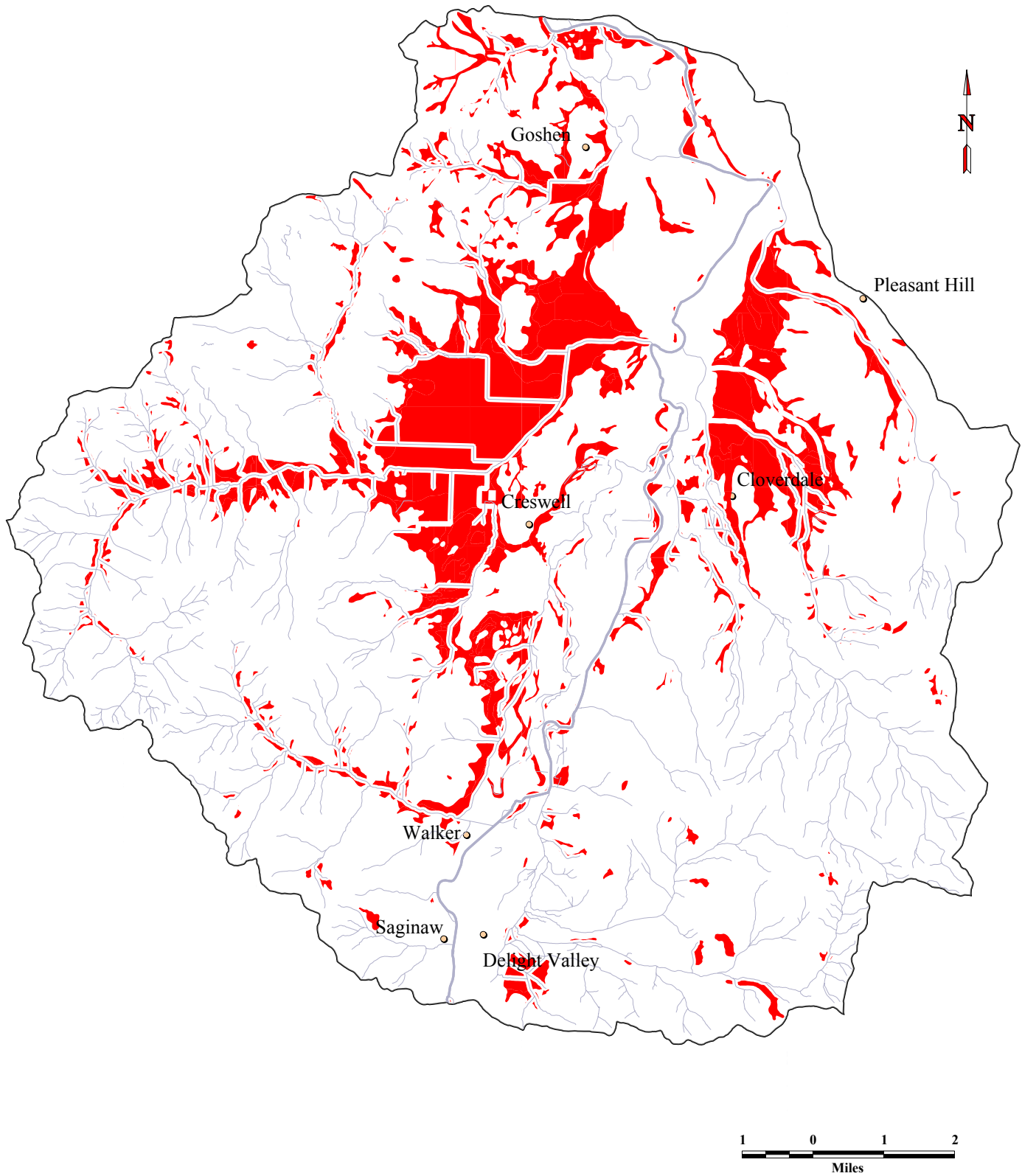




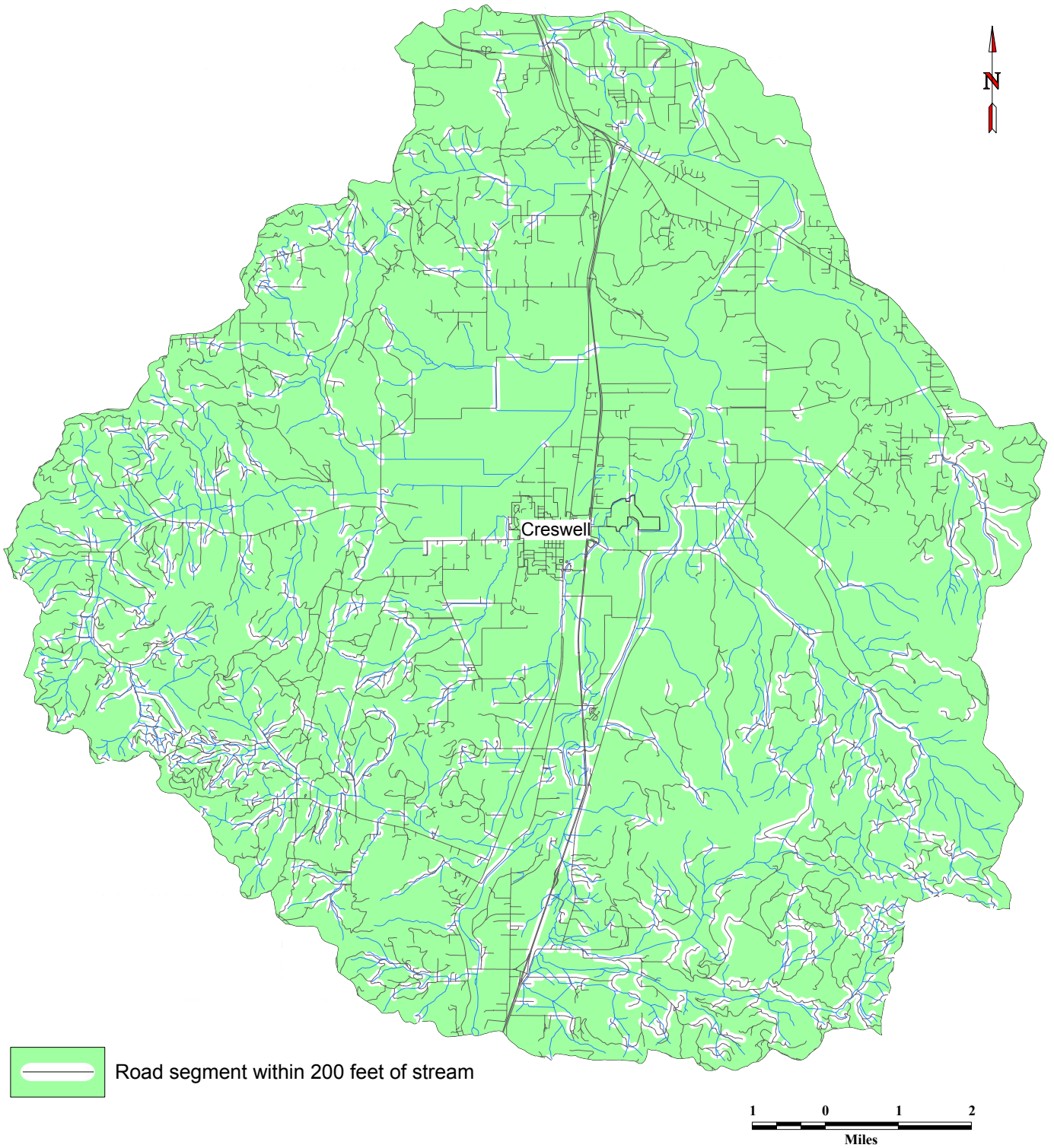
# NATIONAL WETLANDS INVENTORY



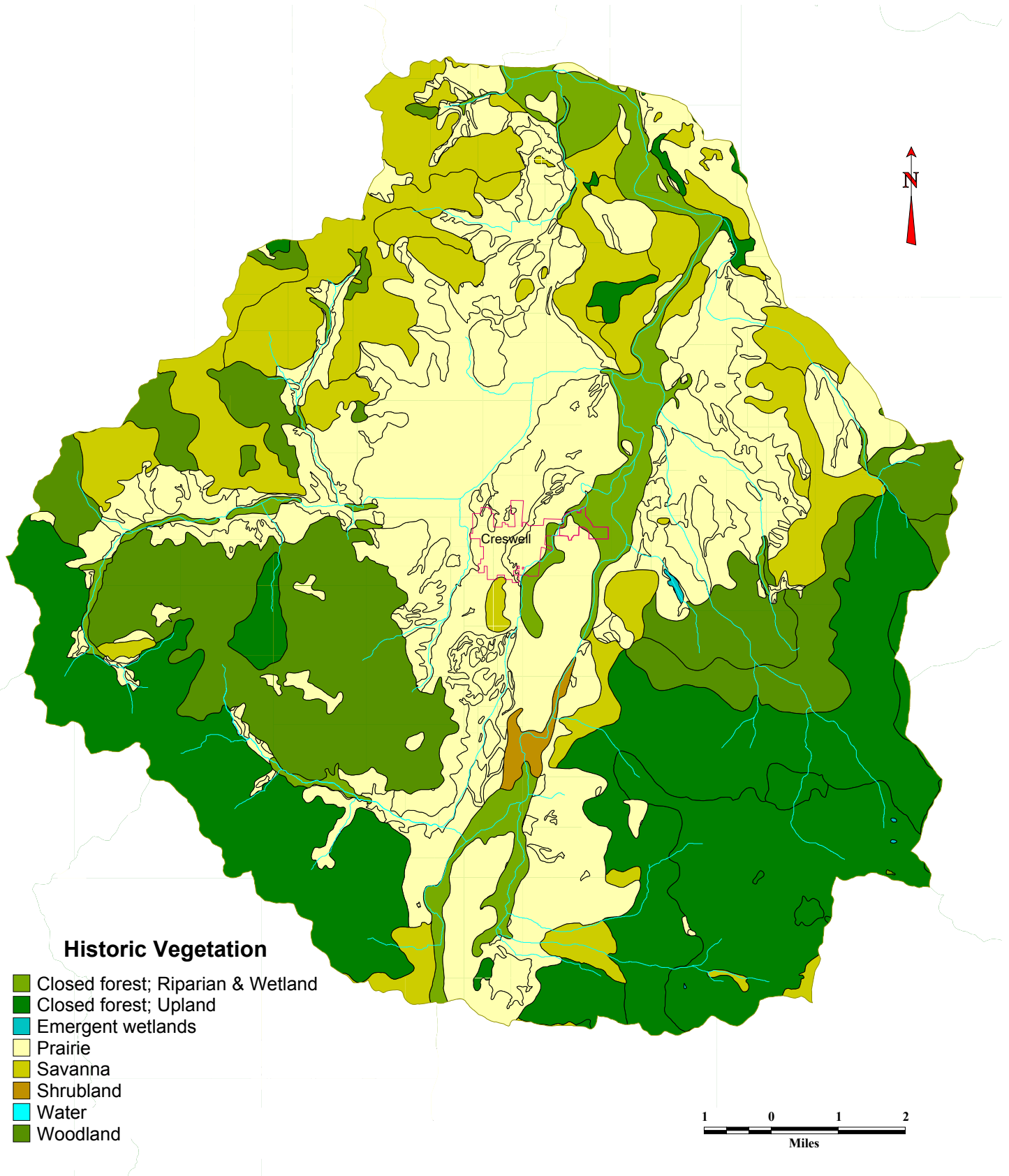
# HYDRIC SOILS GREATER THAN 200' FROM STREAMS



# ROADS WITHIN 200 FEET OF STREAMS

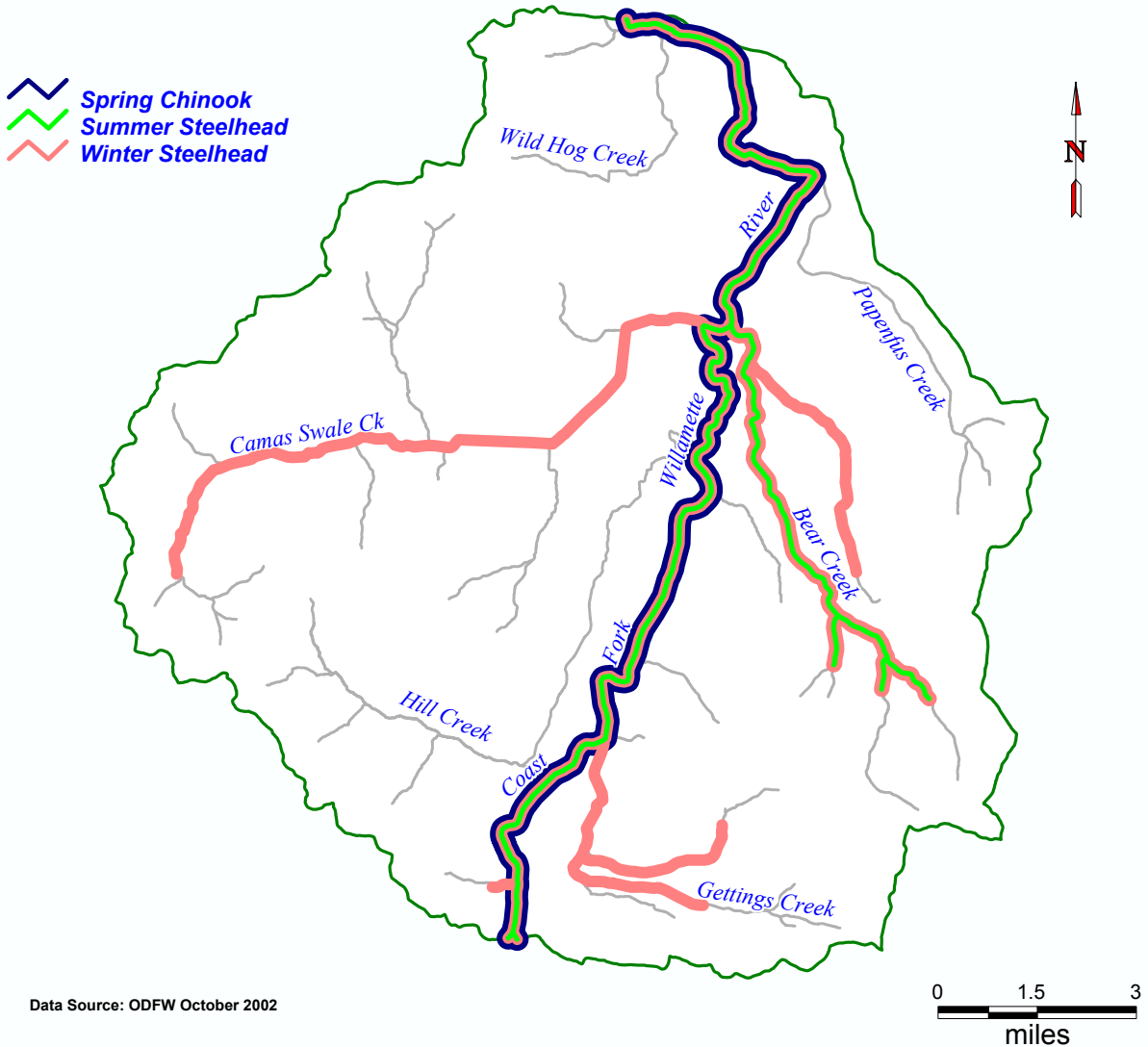


# PRESETTLEMENT VEGETATION BETWEEN 1851 AND 1909

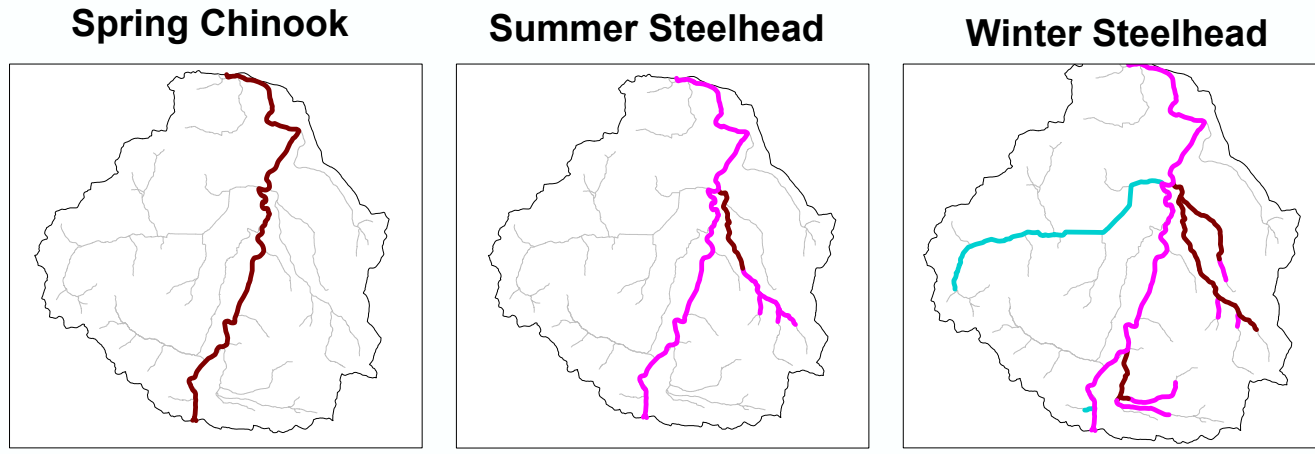




# ANADROMOUS FISH DISTRIBUTION

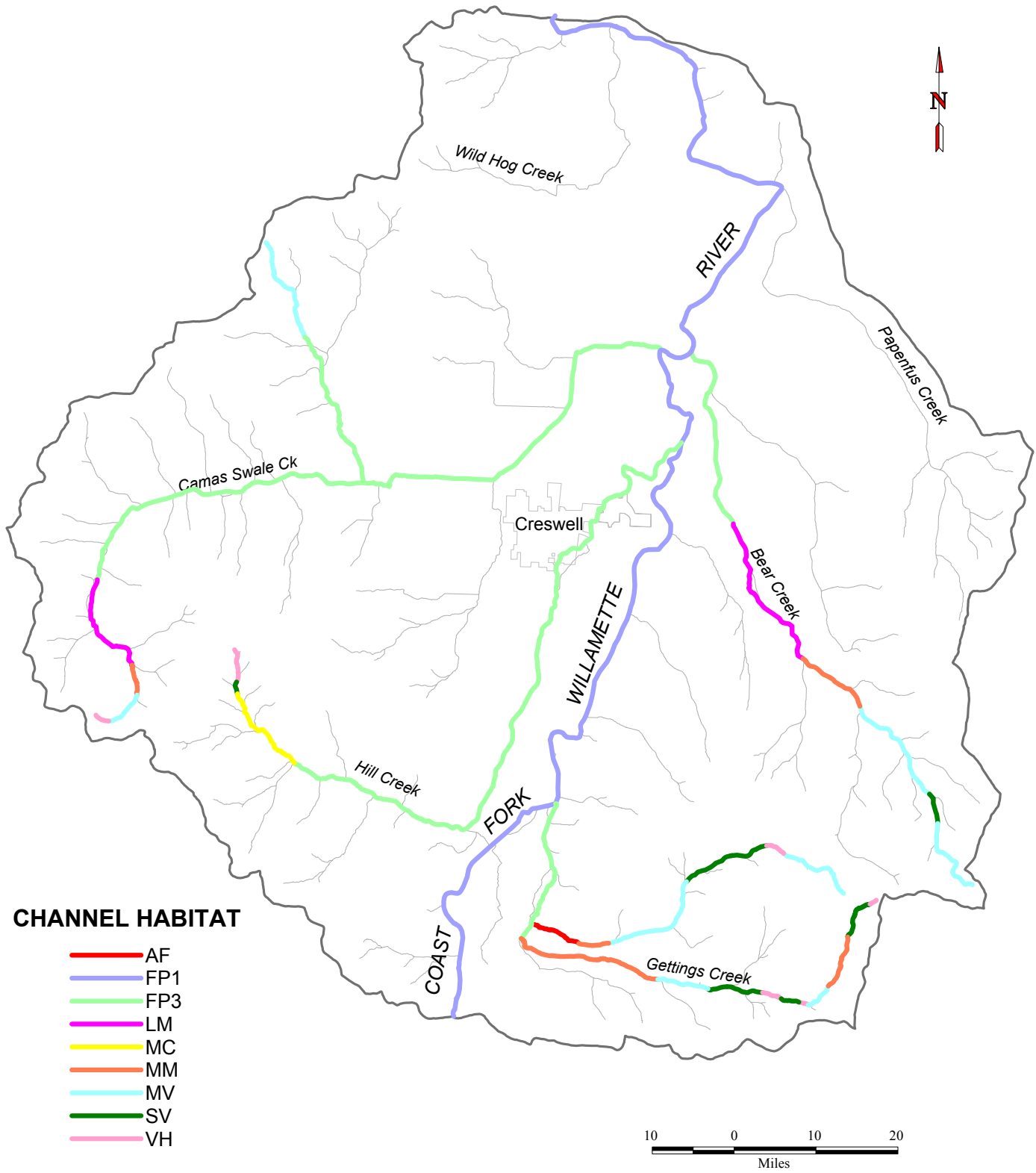


## Habitat Use



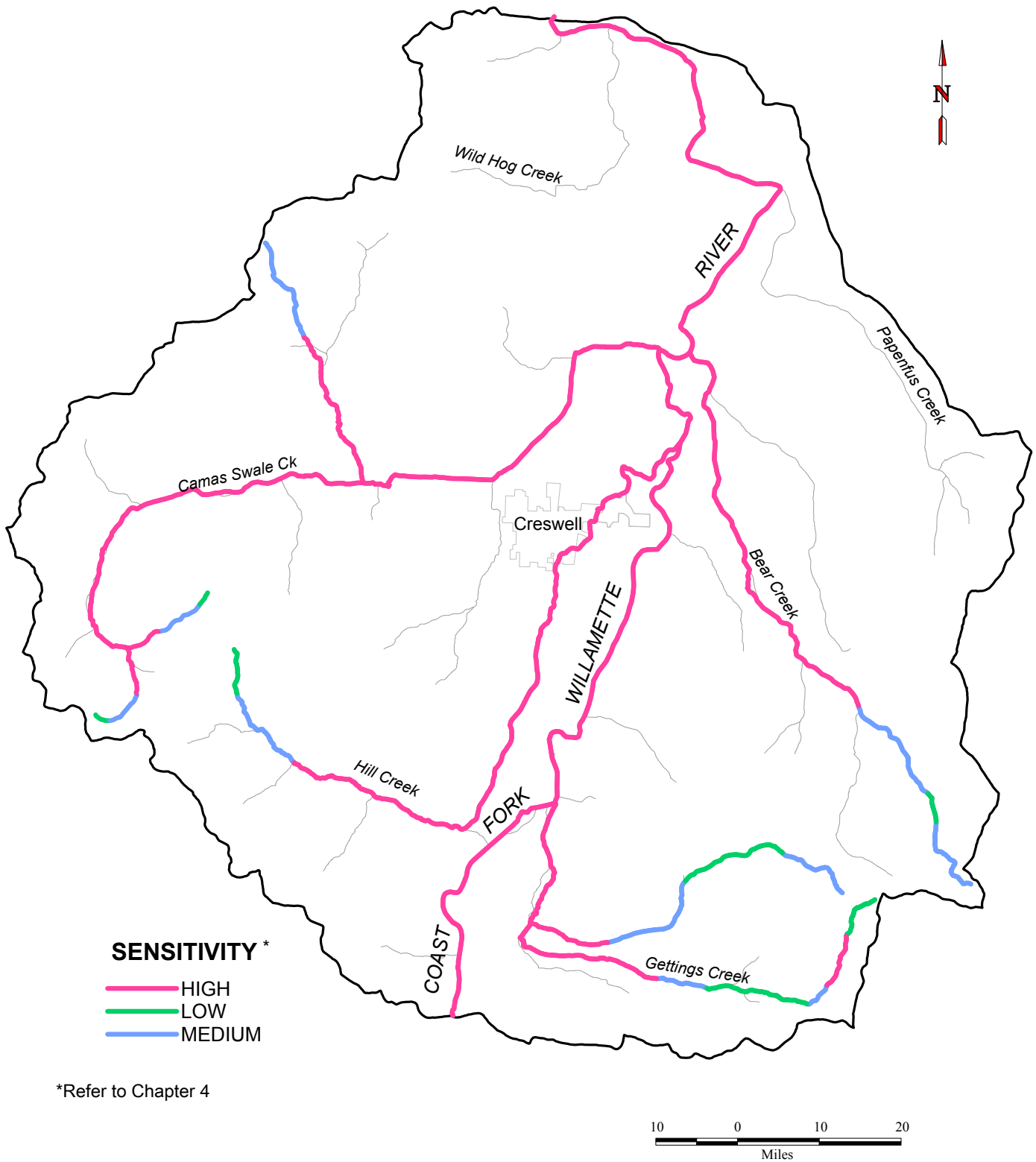
**Key:** Rearing, Spawning, Unknown: Spawning and/or rearing

# CHANNEL HABITAT

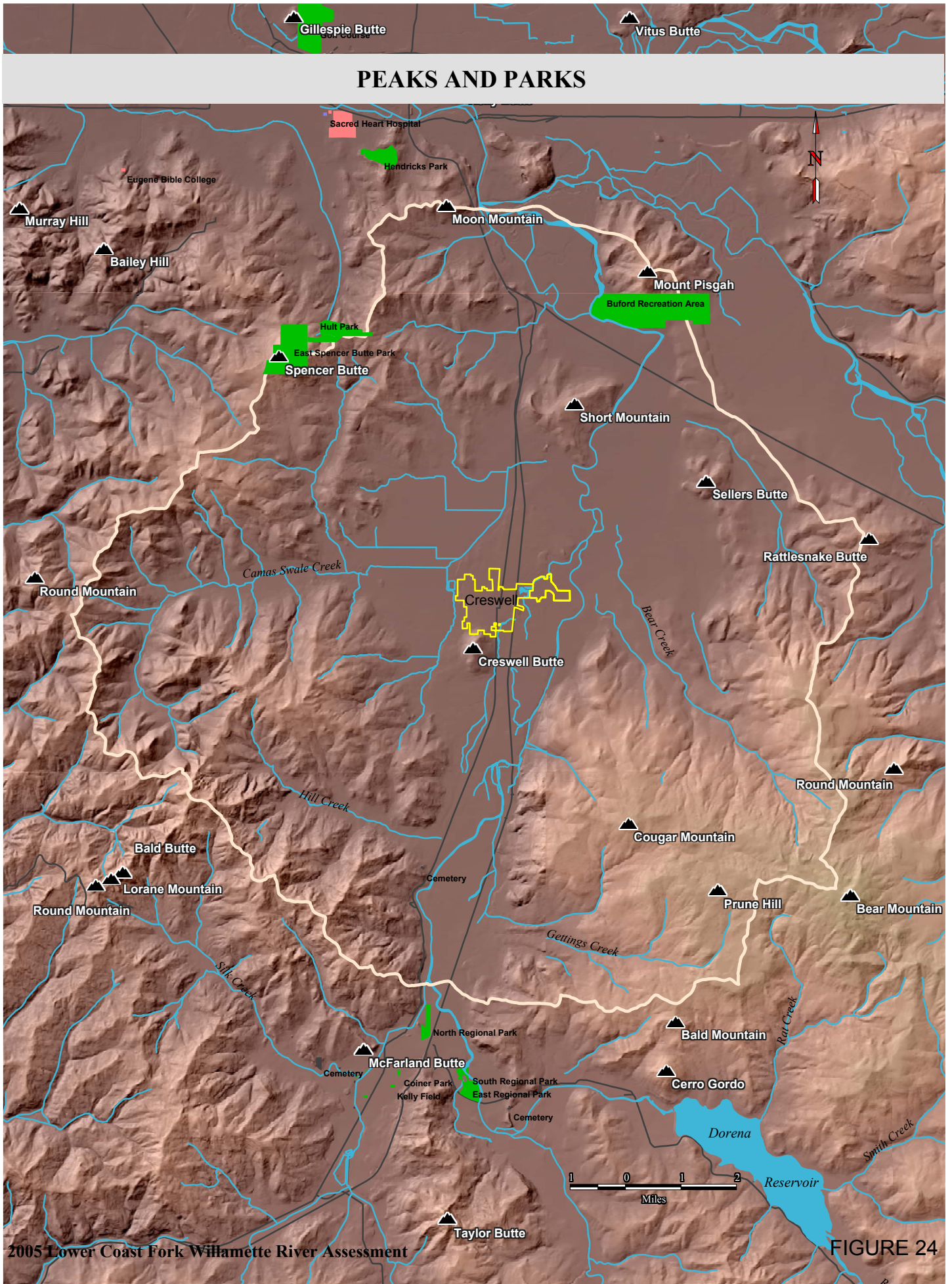


Refer to Table 4.1 for explanation of habitat types

# STREAM RESTORATION SENSITIVITY



# PEAKS AND PARKS





# SURVEY REACHES

